

# Single Phase Energy Meter 36SM



## Overview

VISIONTEK 36SM single phase static electronic energy meter is designed to meter residential and small commercial energy consumers in distribution networks.

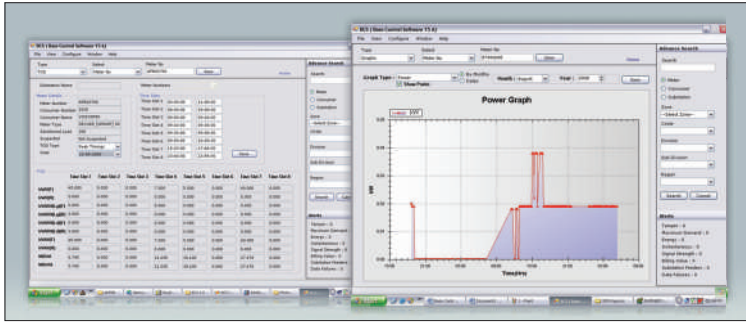
The meter is designed to offer reliable energy measurement in single phase circuit and is highly suitable for metering and remote communication purposes. It comes with large display with a range of communication options for local and remote monitoring. The meter complies with national and international metering standards. It is a perfect combination of well-proven metering technology and state of the art communication modems all integrated in single enclosure. The intelligent features of detecting and recording different anomaly conditions and cover opening events make it ideal choice for revenue protection for distribution companies.

Event Logging	TOD Metering	Load Profiling	Remote Meter Reading
---------------	--------------	----------------	----------------------

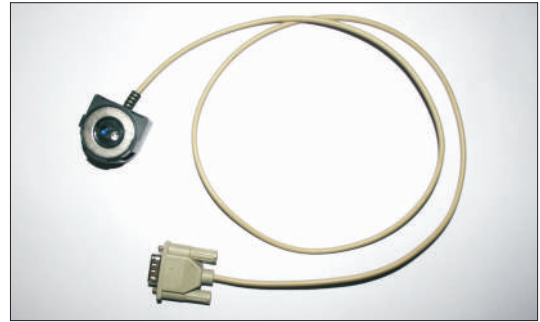
## Features

- Class 1.0 accuracy compliance with IS/IEC standards
- Large LCD display for measurement display and other indications
- Time of Use metering
- Load profiling of kW/kWh with 30 min interval
- Event logging of tampers and cover open detection
- Bill point registers storage up to last 12 months
- LED indication for calibration and meter activity
- IR/IrDA/Optical communication port options for local reading
- RS 232 port for remote reading option
- Meter reading in absence of mains with built-in battery
- High immunity to magnetic influence and electrostatic discharge
- Provision of tamper proof sealing
- Ultrasonic welding option

# Supporting Utilities



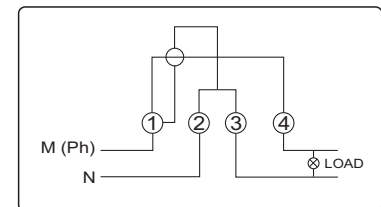
Meter Reading Software 16MS



Meter Reading Cable

## Specifications

Connection Type	Single Phase Two Wire
Accuracy	Class 1.0 IS13779, IEC 62052-11/IEC 62053-21,CBIP report 88
Voltage	Nominal : 240 V (L-N) Operating : -40% to +20%
Current	5-30A, 10-60A
Power Factor Range	Zero (lag) – unity – Zero (lead)
Frequency	50 Hz ± 5%
Starting Current	0.2% of Ib, V ref & unity power factor
Power Consumption	Voltage Circuit : <1.0 W and 4 VA ; Current Circuit : < 1VA
Temperature Range	-10° to +60° C
Humidity	<=95%
Display	Custom built LCD with back-light 6 + 2 digit seven segment display for parameters and icons for other indications
Communication Interfaces	Optical port hardware compatible to IEC 62056-21 * IrDA / IR * Isolated RS232 (Rj11) * LPR 2.4 GHz builtin module
Measured Values/Units	Active energy Maximum demand kW Phase voltage Line current * Maximum Demand kVA * Apparent Energy
Maximum Demand (MD) Register	Integration periods 15/ 30 minutes ; sliding / fixed block method
Billing registers	Upto 12 months bill point cumulative and TOU registers
Time of Use	Upto 6 zones programmable at factory
Tariff registers	Upto 6 tariff registers
Event Logging	Current reversal Neutral missing Earth load Magnetic influence * Front cover open detection * Terminal cover open detection
Enclosure	Case : IP51
Dimensions(L x W x H) in mm	204 x 139 x 83
Weight	0.7 kg +/- 0.1 kg



Connection Diagram

Note: We pursue a policy of continuous research and product development. Specifications and features are subject to change without notice

\*Indicates optional feature



Linkwell Telesystems Pvt. Ltd. Gowra Klassic, Begumpet, Hyderabad 500 016, Andhra Pradesh, INDIA  
Telephone: +91 40 66388000, Fax: +91 40 66388006, e-mail: [info@visiontek.co.in](mailto:info@visiontek.co.in) [www.visiontek.co.in](http://www.visiontek.co.in)