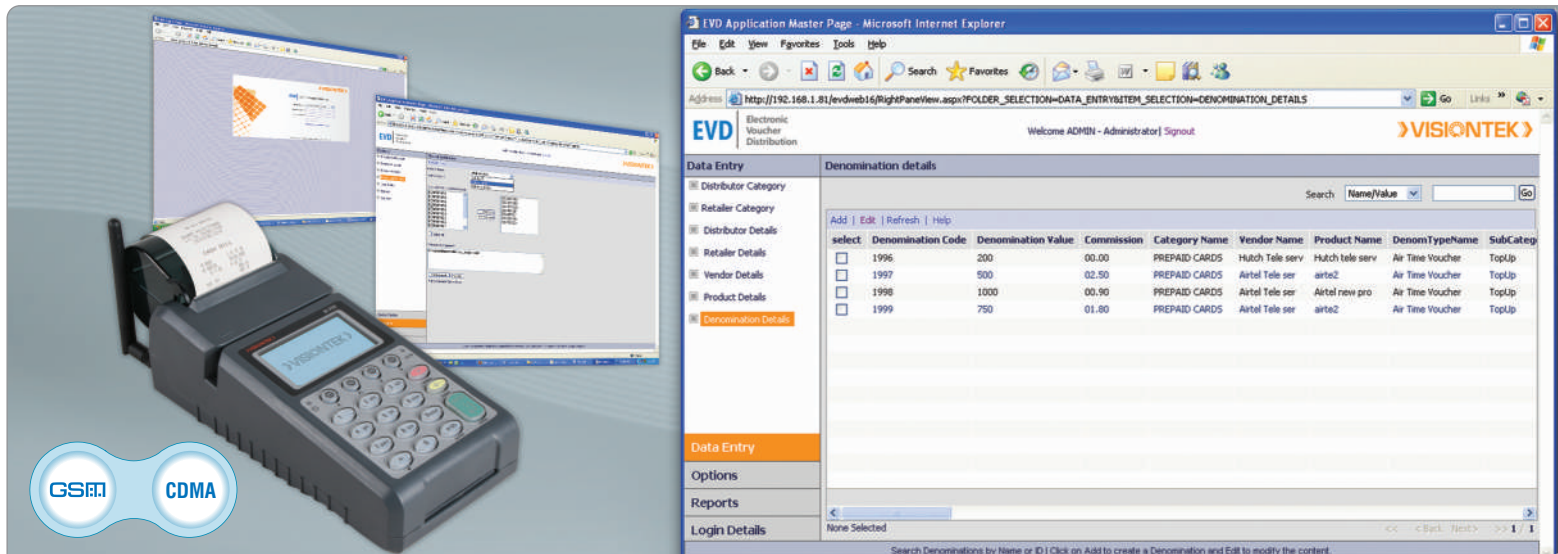


Electronic Voucher Distribution 12E



Overview

Visiontek Electronic Voucher Distribution (EVD) is a simplified solution to purchase Prepaid Mobile Top-Ups and Recharge vouchers through POS terminals, deployed at Retailer's desk. The application is designed and developed to overcome the problems associated with distribution of physical voucher. The objective of the application is to simplify the process of distribution by increasing the availability of vouchers.

EVD is a real-time software solution that provides retailers' with an ability to recharge customer accounts by specified amount, at any time anywhere. Through this method of top-up, the operator can maintain control over the top-up denominations while still benefiting from an electronic distribution system.

The application offers superior commission structure by giving individual retailer commission, distributor commission and denomination specific commissions. The Vast number of reports helps to prepare improved MIS and decision making for Top Management.

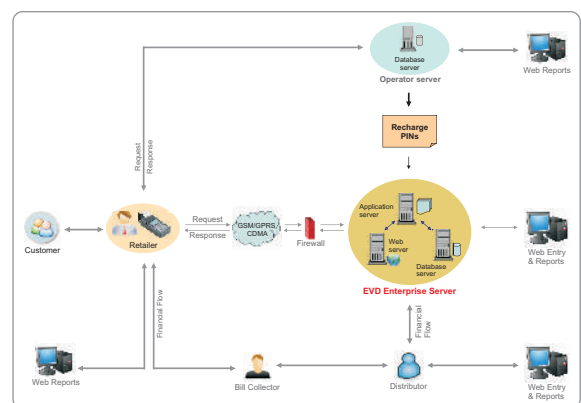
The product is available as EVD 12EE

Benefits

- One stop solution for distributing all prepaid vouchers
- Increased revenues from distributors and retailers
- Guaranteed stock
- Reduce scratch card printing, distribution and storing
- Centralized distribution and Accounting control
- Minimize fraud and theft
- Better commission structure
- Low capital investment
- Minimize the transaction cost
- Elimination of duties and taxes levied on physical vouchers
- More no. of reports for strategic planning
- More potential to sell directly to public
- Introduce more denominations
- Proven, secure and scalable solution

Features

- User defined group creation : Administrator, Distributor, Retailer and Vendor
- Web login for all users
- Selective privileges to Distributors and Retailers
- Creation of Sub-users with privileges assigned
- Specific commission structure to each distributor and retailer
- Programmable Broadcast and Advertisement messages
- Online, Offline, Bulk purchase, Buy Pin with code, print last sale features
- Pin import from Excel or CSV
- Pin migration from one denomination to other
- Added Manual settlement, Manual rollback & Auto settlement
- Pin-less recharge (e-Topup) from terminal
- Dynamically updates terminal software
- Mode of Communications : GSM/GPRS or CDMA
- Shield of unsettled PINs in the terminal
- Supports Prepaid & Postpaid (with billing) operations
- Vast number of Reports for strategic planning
- Instructive Help index



Application Architecture Diagram

Centralized distribution and inventory control

User creation with specific privileges to Distributor and Retailer

Remote software updation

Low transaction cost

Specifications

Server side Requirements

Operating System	Microsoft Windows 2003 Server standard edition with SP2
Database	Microsoft SQL 2005 standard edition
Processor	Intel xeon(Quad core) 2.0 GHZ & 12MB cache &1333Mhz FSB
RAM	Min 4GB
Hard disk drives	300GB x 3(3swap SAS drives)
Power Supply	Dual redundant, hot swappable
Tape Drive	For backup purposes
Redundancy	Dual-redundant servers Hot take-over functionality
Websserver	IIS
Web Browser	Microsoft Internet Explorer V 6.0
Framework	Dot Net 2.0
Office	Microsoft Office 2003
Others	Antivirus Adobe Acrobat

Administration Interface

Administrator Levels	<ul style="list-style-type: none">Local Login : Root, AdministratorWeb Login : Administrator, Distributor, Retailer, Vendor
Administrator Security	<ul style="list-style-type: none">Administrator password to login in
Distributor Management	<ul style="list-style-type: none">Creation / Modification of Distributor details with individual logo and commissionPrivileges to individual distributorActivate / Deactivate assigned denominations
Retailer Management	<ul style="list-style-type: none">Add /Edit Retailer details with category and terminal configuration and updating of credit, commission, customizable banner etc.
Denominations	Denomination details are classified into <ul style="list-style-type: none">2 Subcategories (Top up & RCV)20 denominations for each sub categorySpecific Commission for each denominationProgrammable instructionsTypes : Airtime Vouchers, International calling cards and Internet Vouchers
Additional Functions	<ul style="list-style-type: none">Manual settlementManual rollback of unused PinsAuto settlementRemote updating of terminal software
POS Terminal Management	<ul style="list-style-type: none">Assign to RetailerUpdating current balanceAdding credit limit

Note:

1. Transactions limit is purely dependant on SQL Server support and disk space.
2. Number of hits per second is dependant on the TCP/IP connection for GPRS and CDMA Communication
3. Speed of the transaction is dependant on bandwidth of the connection

Configuration of the Terminal	<ul style="list-style-type: none">Remote configuration of terminal software and vendor logos
Operations	<ul style="list-style-type: none">User creation with privileges assignedProgrammable Broadcast message to individual retailersPin migration from one denomination to other
PIN Import	<ul style="list-style-type: none">PIN Import from excel / * CSV file with pre-defined file formatEncryption /decryption of PINs in database
Reports	<ul style="list-style-type: none">Consolidated reports for Pin details, Stock details, distributor details, Retailer details, Manual settlement, manual rollback etc
Web Reports	<ul style="list-style-type: none">Distributor balance details, Retailer sales details, Distributor and Retailer daily sales etc

Performance

GSM Communication	<ul style="list-style-type: none">Multiple modems can be used to increase throughput in case of CSD Supports 3-5 transactions per minute over GPRS (dependent on transaction type, Communication bandwidth, No. of concurrent users and Data volume in the database) <p>Tested concurrent users : 250</p>
-------------------	---

Client/POS Terminal Connectivity

GSM	<ul style="list-style-type: none">2 Mbps line with Static Public IP for connecting over GSM / GPRS
CDMA	<ul style="list-style-type: none">2 Mbps line with Static Public IP for connecting over CDMA

Client Specification

Desktop POS Terminals	<ul style="list-style-type: none">Visiontek 92 POS (GSM / GPRS or CDMA) <p>Note : Number of terminals limited only by license agreement</p>
Administration Security	<ul style="list-style-type: none">Sophisticated password protection for login and configuration
Menus Structure	<ul style="list-style-type: none">An user-friendly menu structure with Application, settings and configuration
Operations	<ul style="list-style-type: none">Mode of operation include Online, Offline, Bulk Purchase, Buy with code, Settlement etc.
Reports	<ul style="list-style-type: none">Reports include - Day wise Sales Report, From - To date Sales Report and Stock Report
Pins Back up in terminal	<ul style="list-style-type: none">Backup of "sold but unsettled" pins in the terminal

4. Firewall Security has to be given to the Server
5. Back up of the database has to be taken from the SQL Server
6. Training on the software is provided on request

We pursue a policy of continuous research and product development. Specifications and features are subject to change without notice.

